

# Connect 24/7 – Quick guide CWS Customer Basic

2020

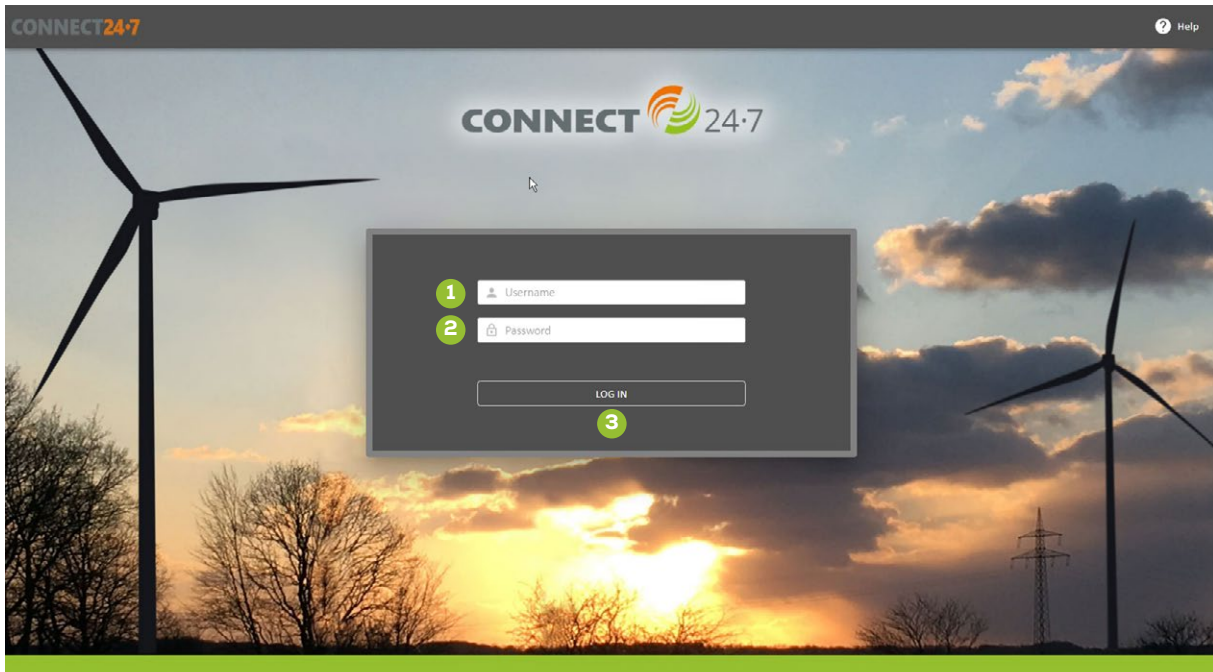




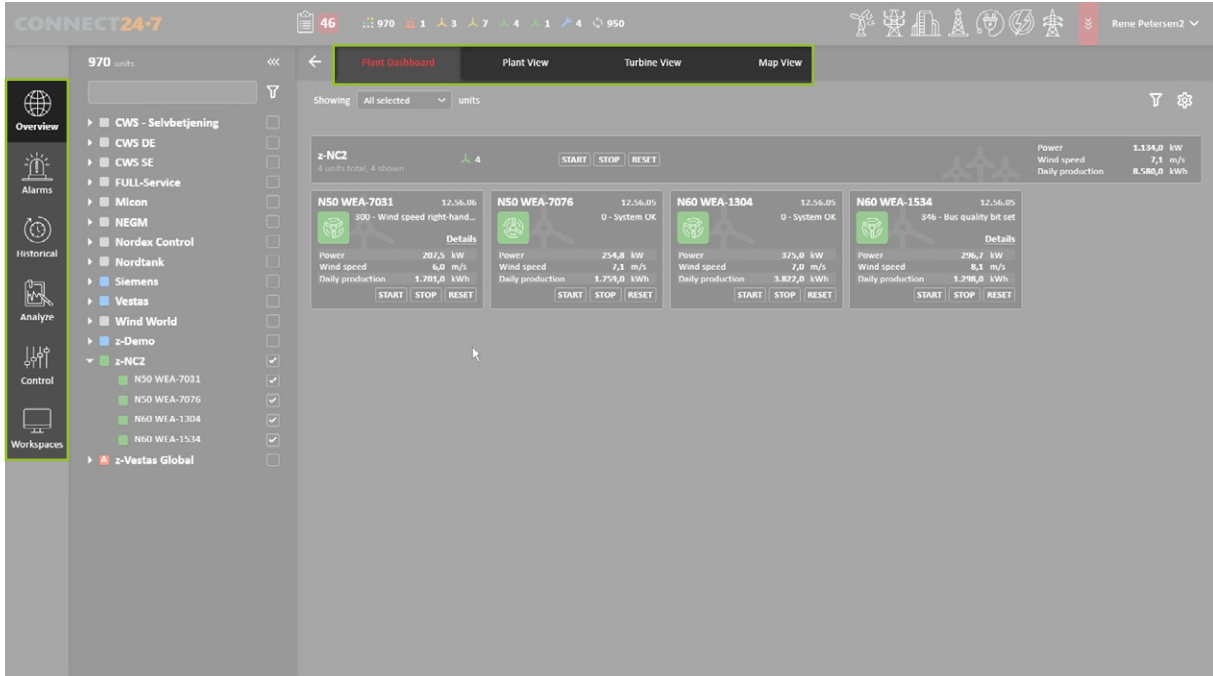
# Content

Login	4
Navigation functions	5
Link - Turbine view	5
Turbine view - Hourly production	6
Turbine view - 7 days production	6
Historical - Production	7
Historical - Production - daily	7
Plant view - Daily production	8
Turbine view - Availability	9
Historical - Availability	9
Turbine view - Historical graph	10
Historical - Historical graph	10
Turbine view - Online graph	11
Historical - Power curve - line	12
Historical - Power curve - dot	12
Workspace - New	13
Workspace - Edit	13
Help - Before Login	14
After Login	14
Appendix 1	15
SCADA color description	15

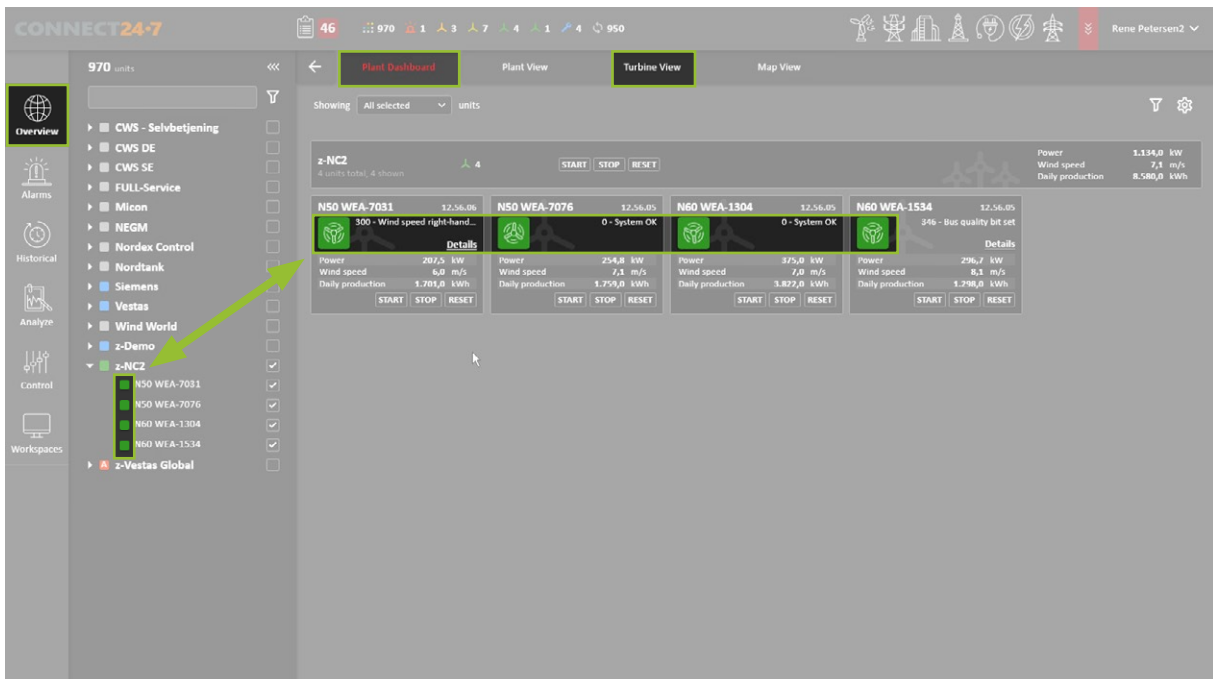
# Login



# Navigation functions



# Link - Turbine view



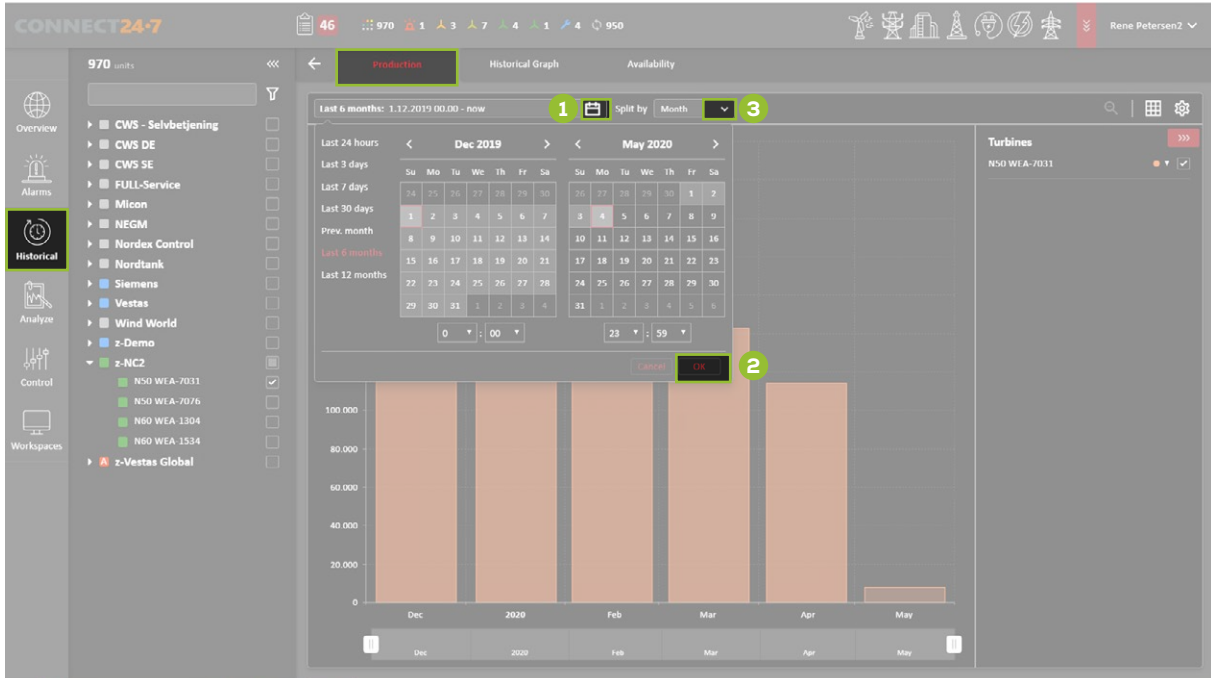
# Turbine view - Hourly production



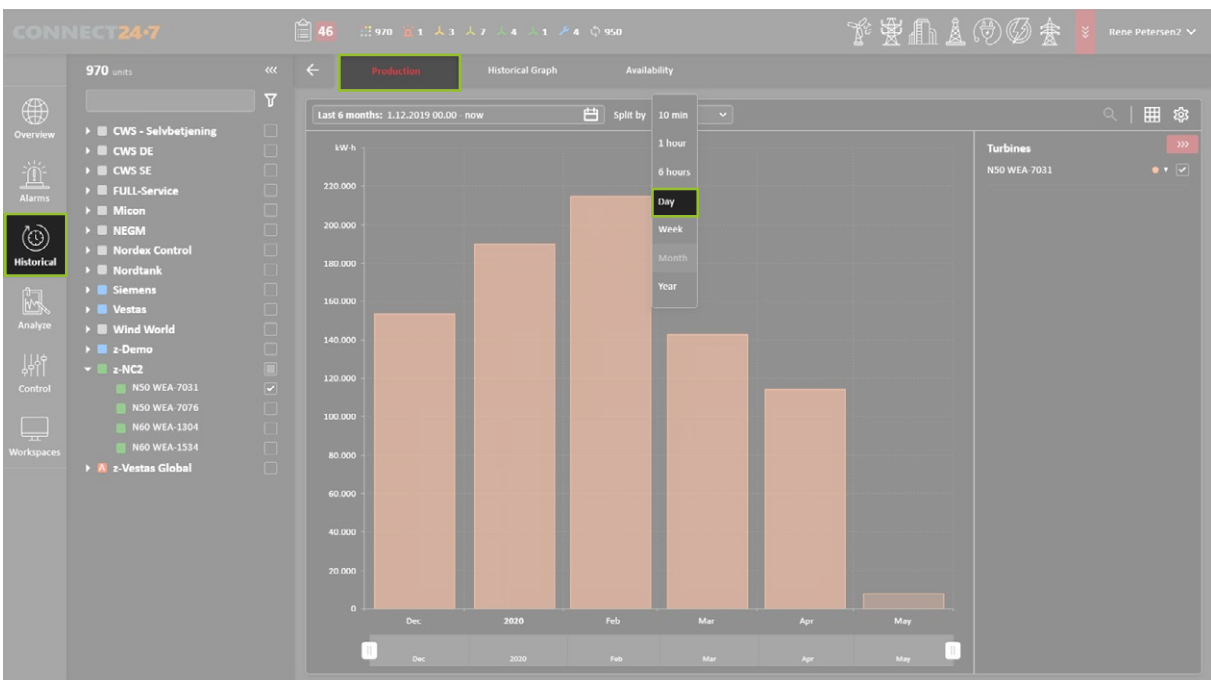
# Turbine view - 7 days production



# Historical - Production



# Historical - Production - daily



# Plant view - Daily production

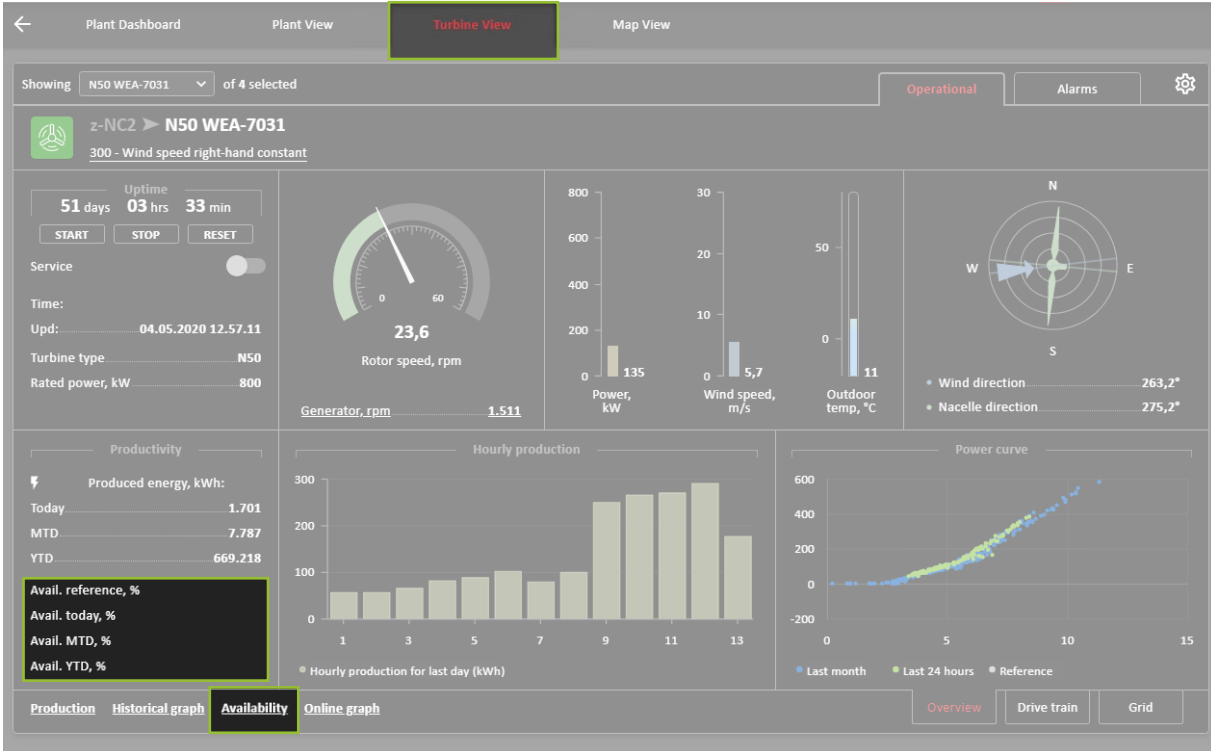
The screenshot displays the 'CONNECT24-7' software interface. At the top, there are navigation tabs for 'Plant Dashboard', 'Plant View' (which is highlighted), 'Turbine View', and 'Map View'. The 'Plant View' tab shows a table of wind turbine data. The table has columns for 'Target', 'Wind speed', 'Power', and 'Daily production'. The 'Daily production' column is highlighted with a green box. The data is as follows:

Target	Wind speed	Power	Daily production
z-NC2	6,7	885	8.580
N50 WEA-7031	7,1	278	1.701
N50 WEA-7076	6,5	136	1.759
N60 WEA-1304	6,4	244	3.822
N60 WEA-1534	6,7	227	1.298

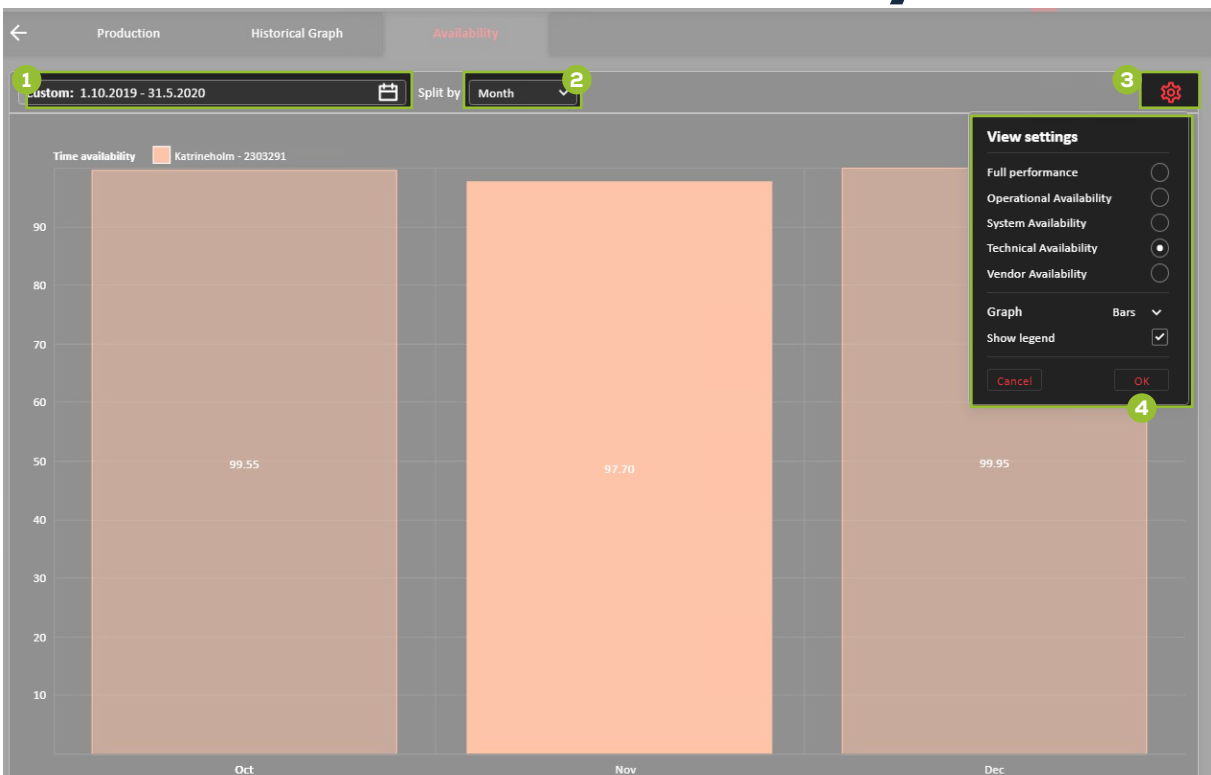
The interface also includes a left-hand navigation menu with categories like 'Overview', 'Alarms', 'Historical', 'Analyze', 'Control', and 'Workspaces'. The top right corner shows the user's name 'Rene Petersen2' and a dropdown arrow.



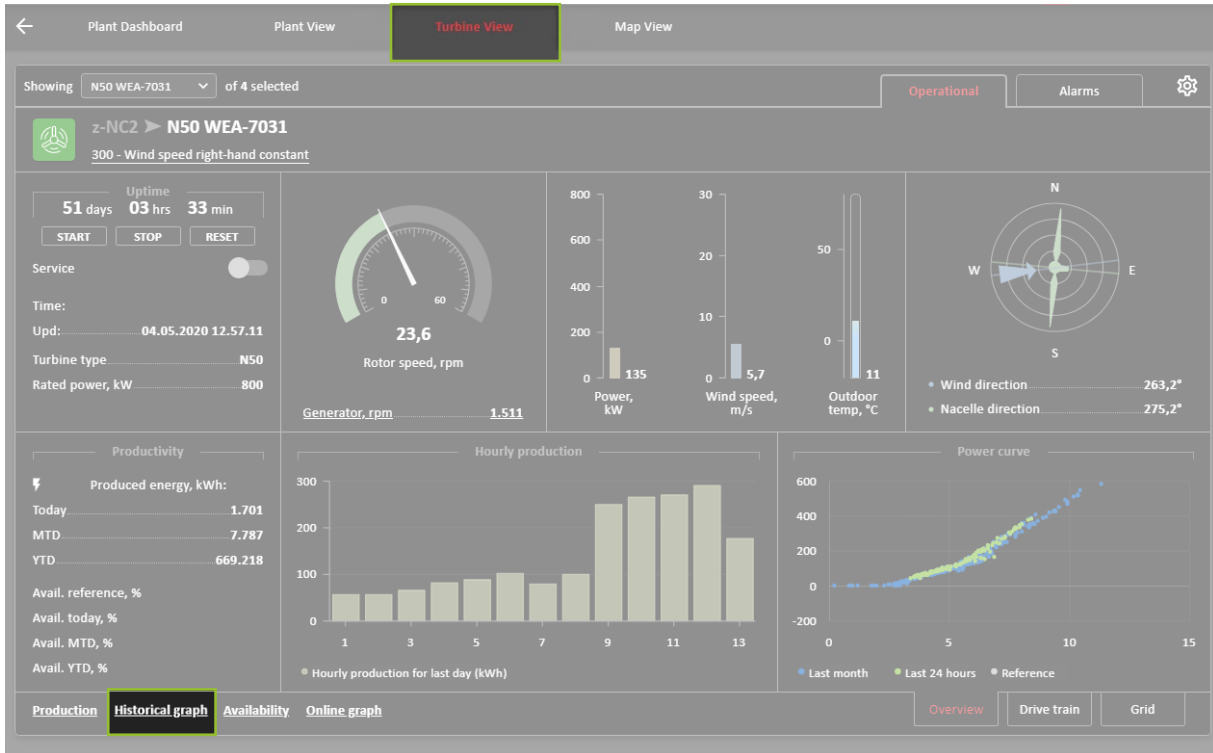
# Turbine view - Availability



# Historical - Availability



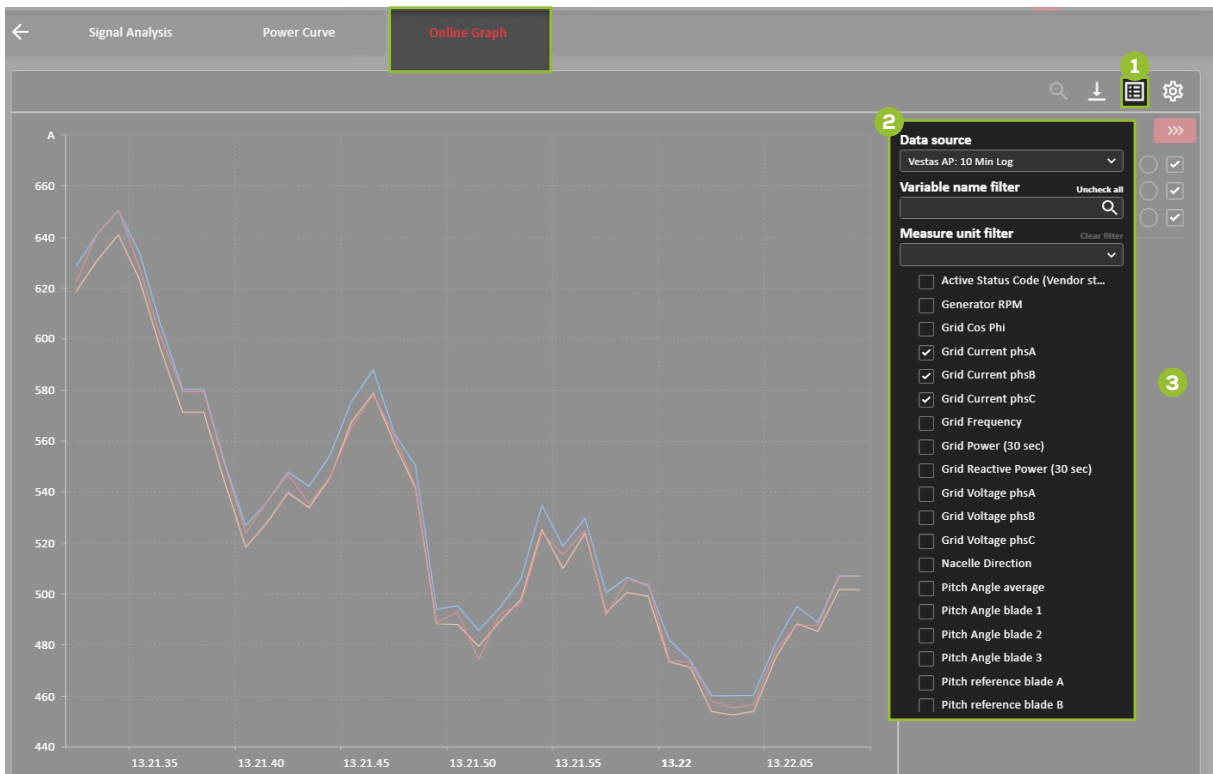
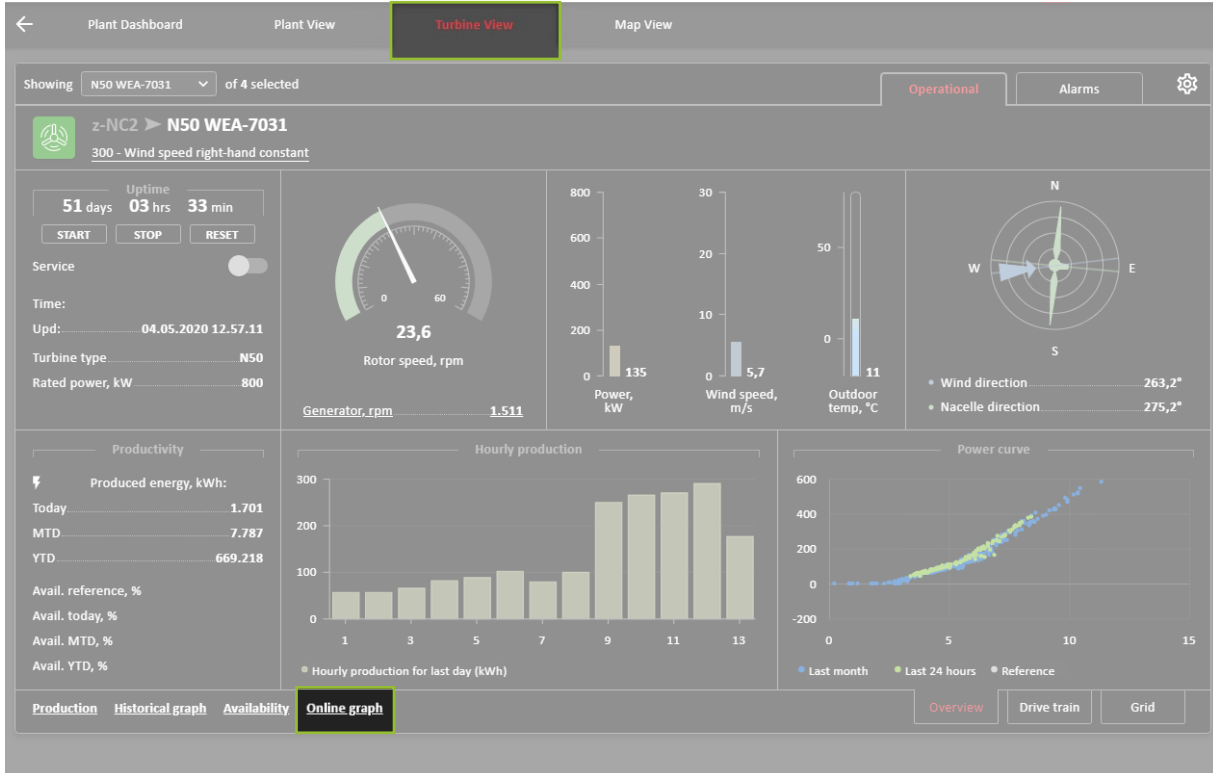
# Turbine view - Historical graph



# Historical - Historical graph



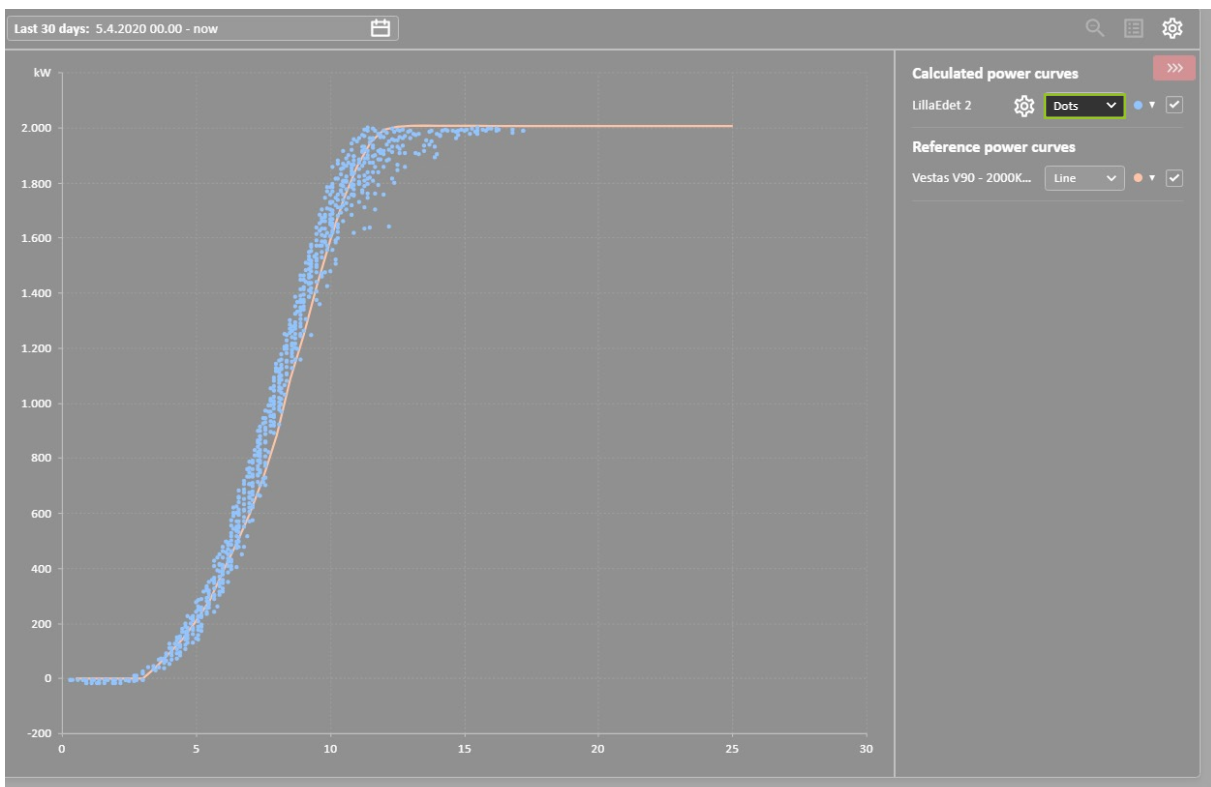
# Turbine view - Online graph



# Historical - Power curve - line



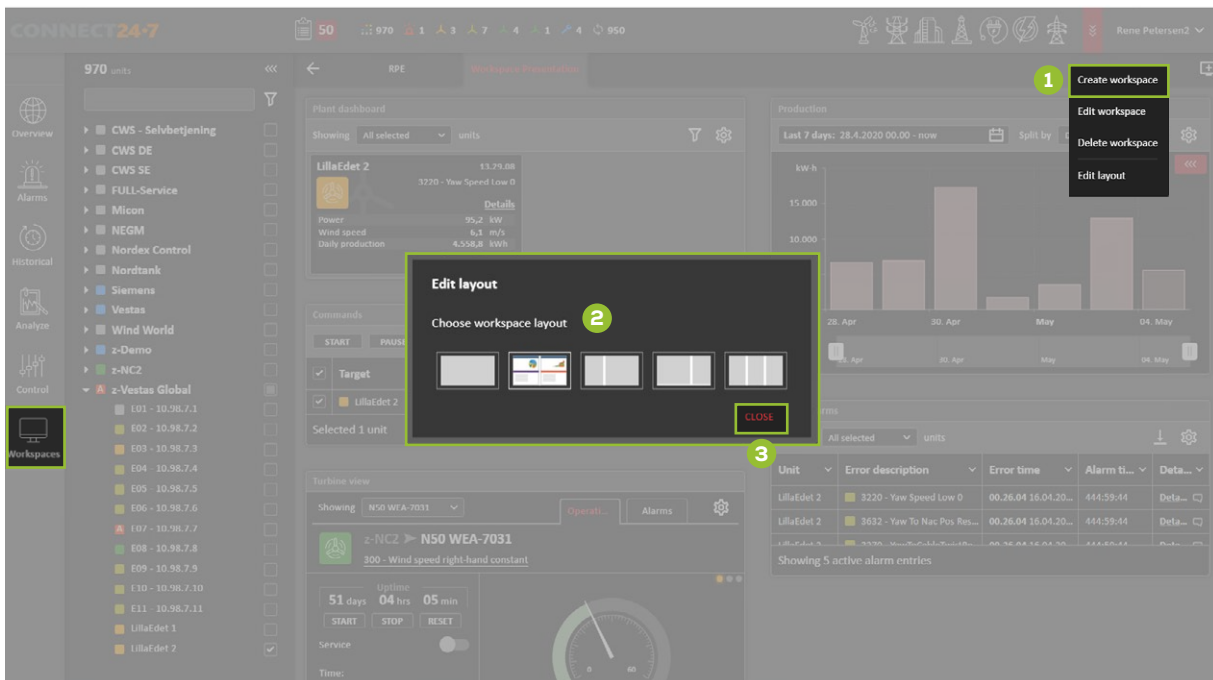
# Historical - Power curve - dot



# Workspace - New



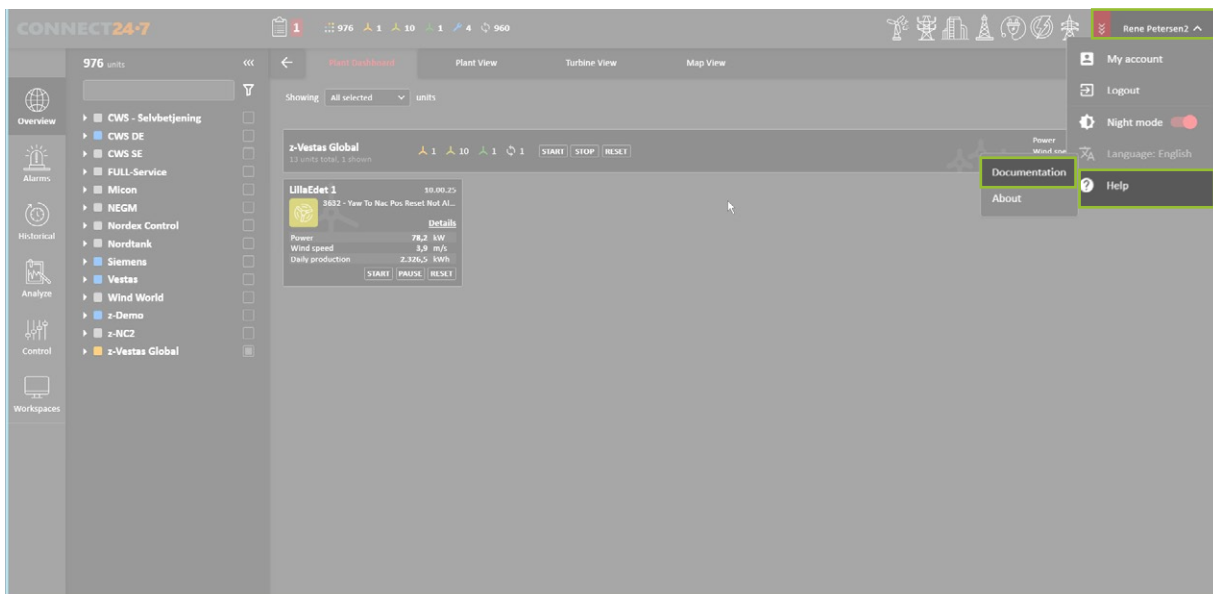
# Workspace - Edit



# Help - Before Login











# After Login



# Appendix 1

## SCADA color description

SCADA icon colors description will be based on the tree structure filter option.

SCADA description	SCADA icon	Description
<b>Error</b>		Turbine in Alarm mode and not producing (stopped/idle mode)
<b>Warning</b>		Turbine still in operation, notification to surveillance team.
<b>Remote stop</b>		Turbine has been stopped from remote, taken out of production.
<b>Autoreset</b>		Turbine has stopped, after delay (depends on turbine type) time turbine will automatically reset and start producing energy again.
<b>Production</b>		Turbine is in normal operating mode and producing energy.
<b>In service</b>		Turbine is in service mode, either remote or local by service team.
<b>Service Level 1</b>		Service Level1 = Surveillance team working on turbine.
<b>Service Level 2</b>		Service Level2 = Surveillance technical experts working on trouble shooting.



**Connected Wind Services A/S**  
Nyballevej 8 · 8444 Balle · Denmark  
+45 5080 2045 · [info@connectedwind.com](mailto:info@connectedwind.com)

**CONNECTED**   
WIND SERVICES