

Connect 24/7 – Quick guide CWS Customer Basic

2020





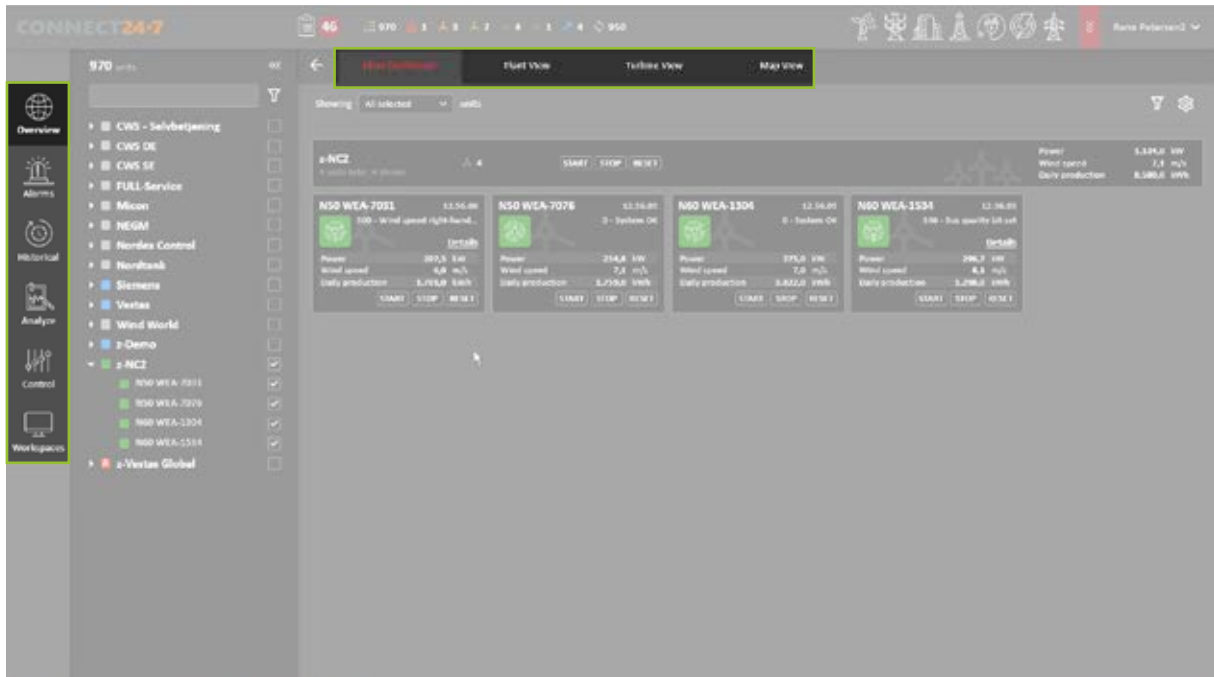
Content

Login	4
Navigation functions	5
Link - Turbine view	5
Turbine view - Hourly production	6
Turbine view - 7 days production	6
Historical - Production	7
Historical - Production - daily	7
Plant view - Daily production	8
Turbine view - Availability	9
Historical - Availability	9
Turbine view - Historical graph	10
Historical - Historical graph	10
Turbine view - Online graph	11
Historical - Power curve - line	12
Historical - Power curve - dot	12
Workspace - New	13
Workspace - Edit	13
Help - Before Login	14
After Login	14
Appendix 1	15
SCADA color description	15

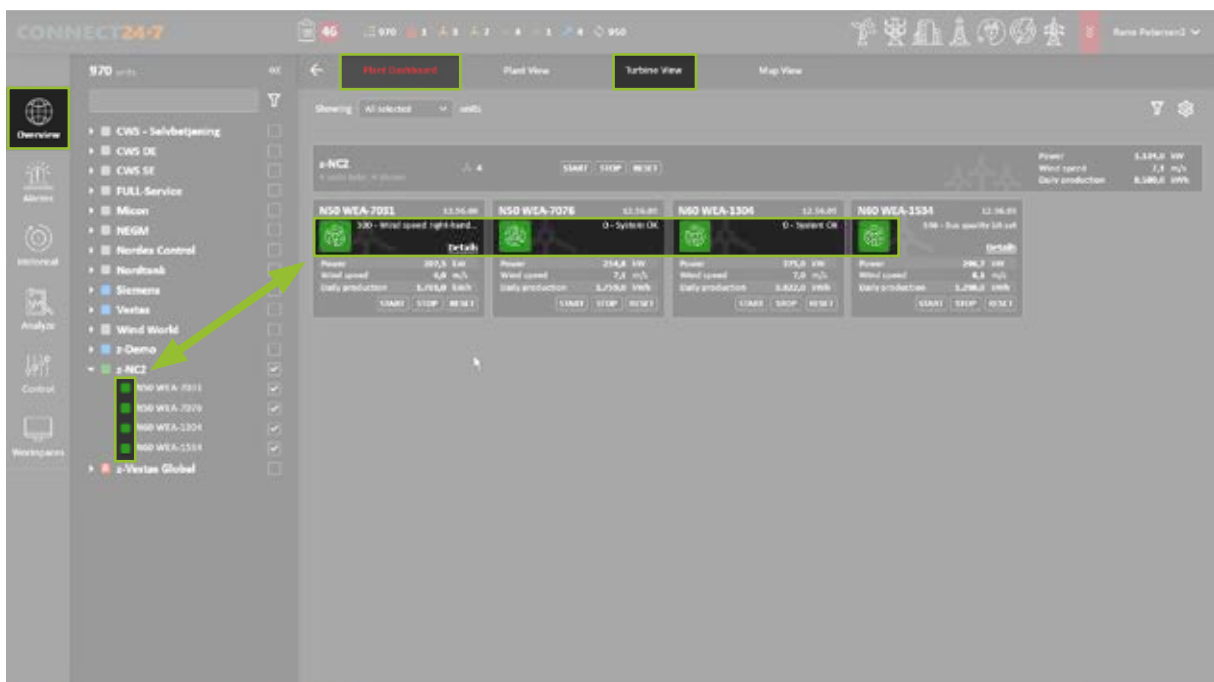
Login



Navigation functions



Link - Turbine view



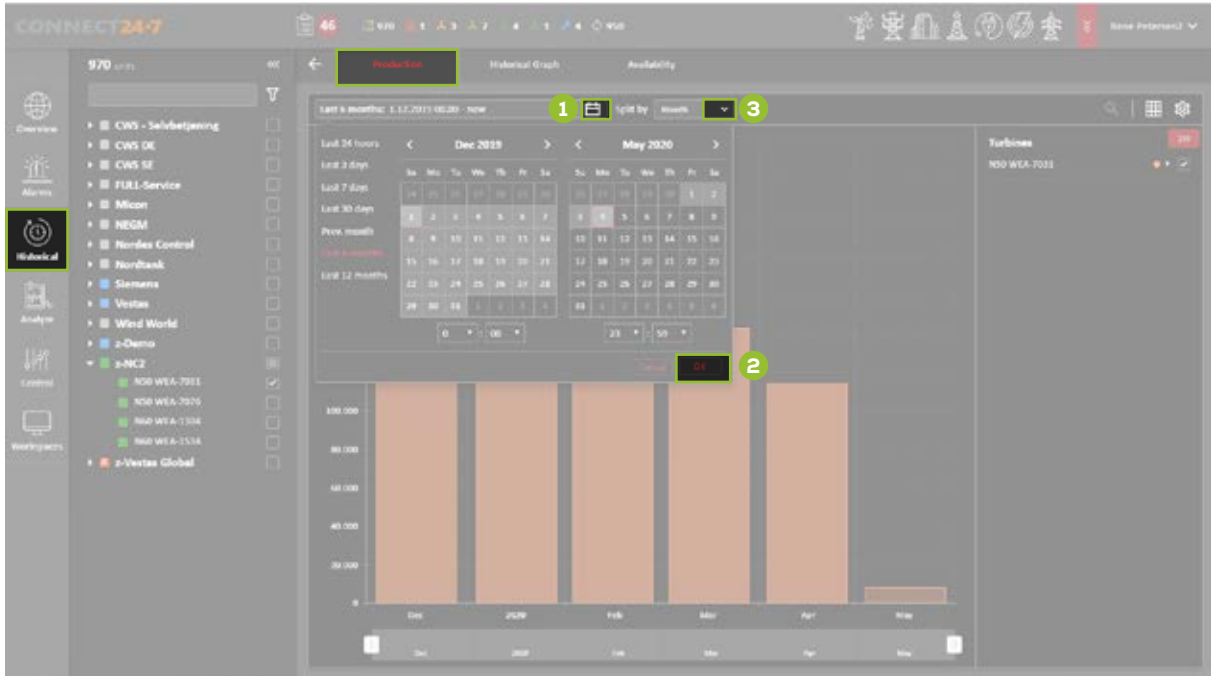
Turbine view - Hourly production



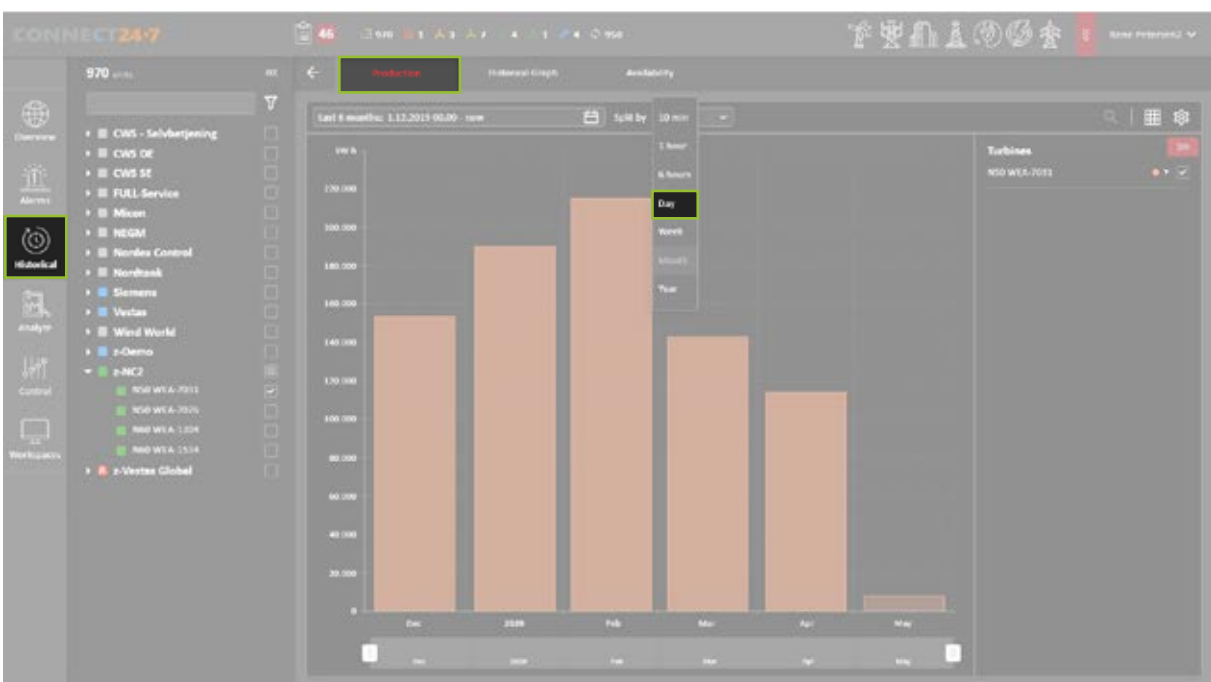
Turbine view - 7 days production



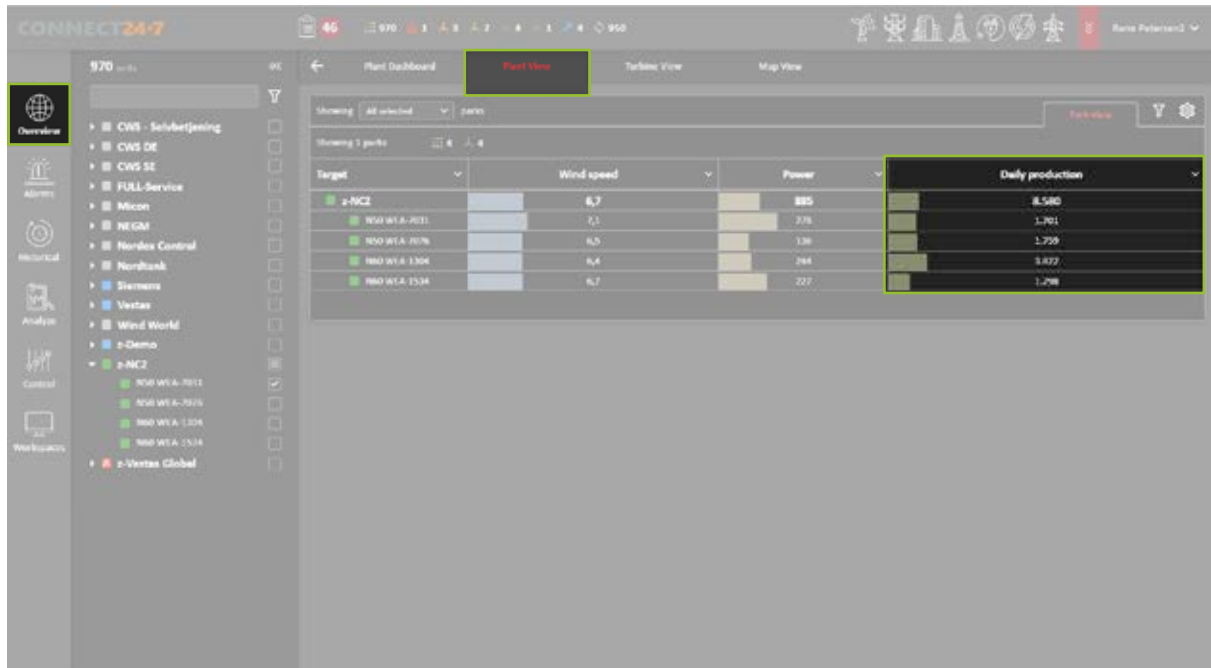
Historical - Production



Historical - Production - daily



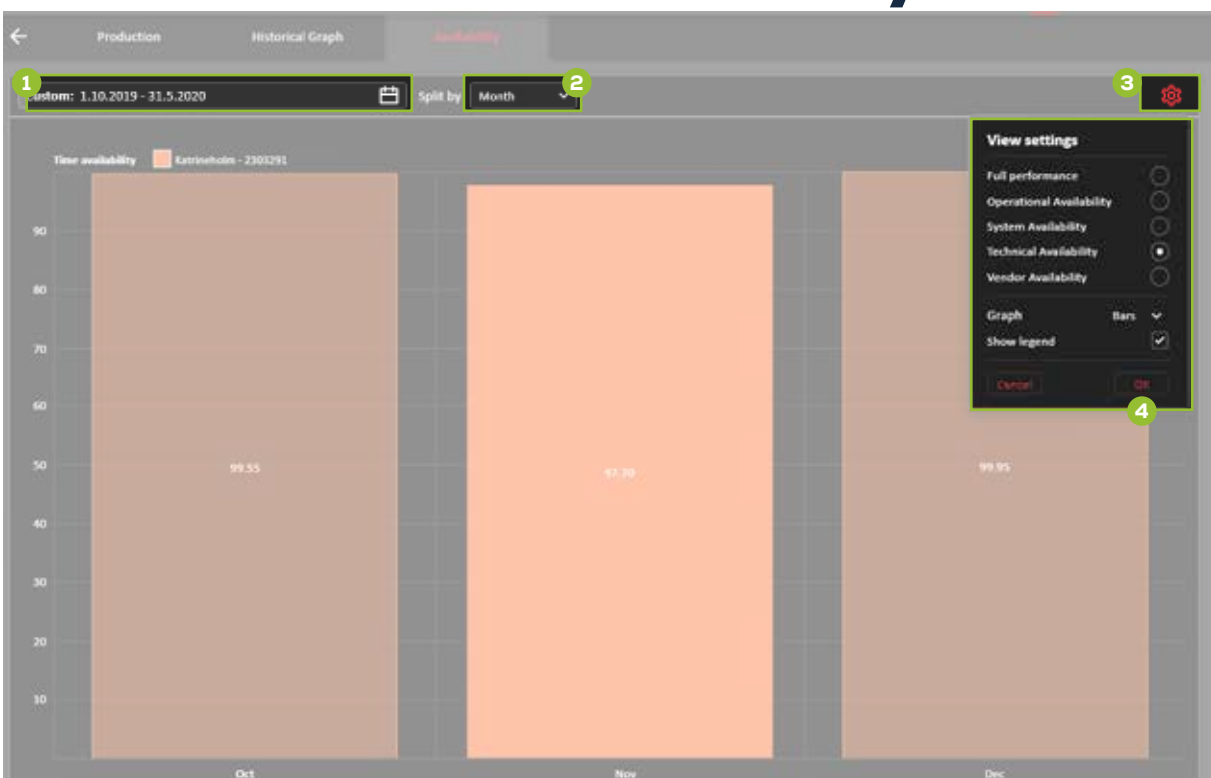
Plant view - Daily production



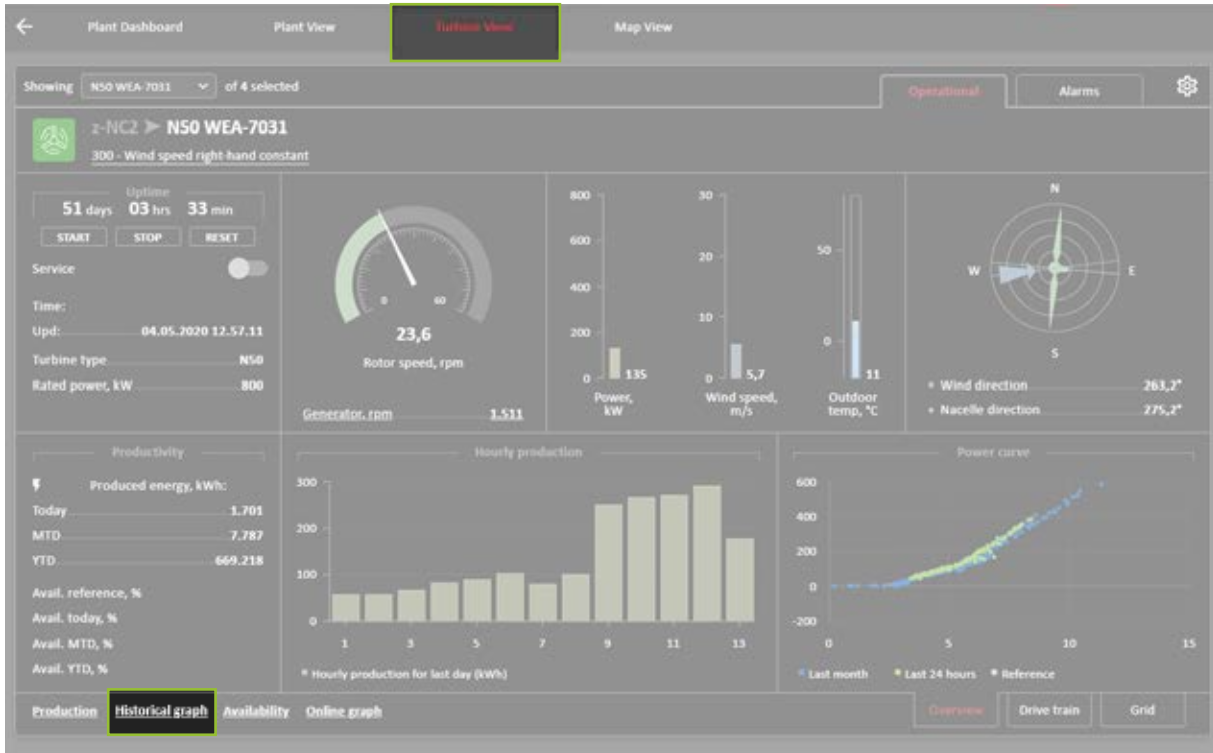
Turbine view - Availability



Historical - Availability



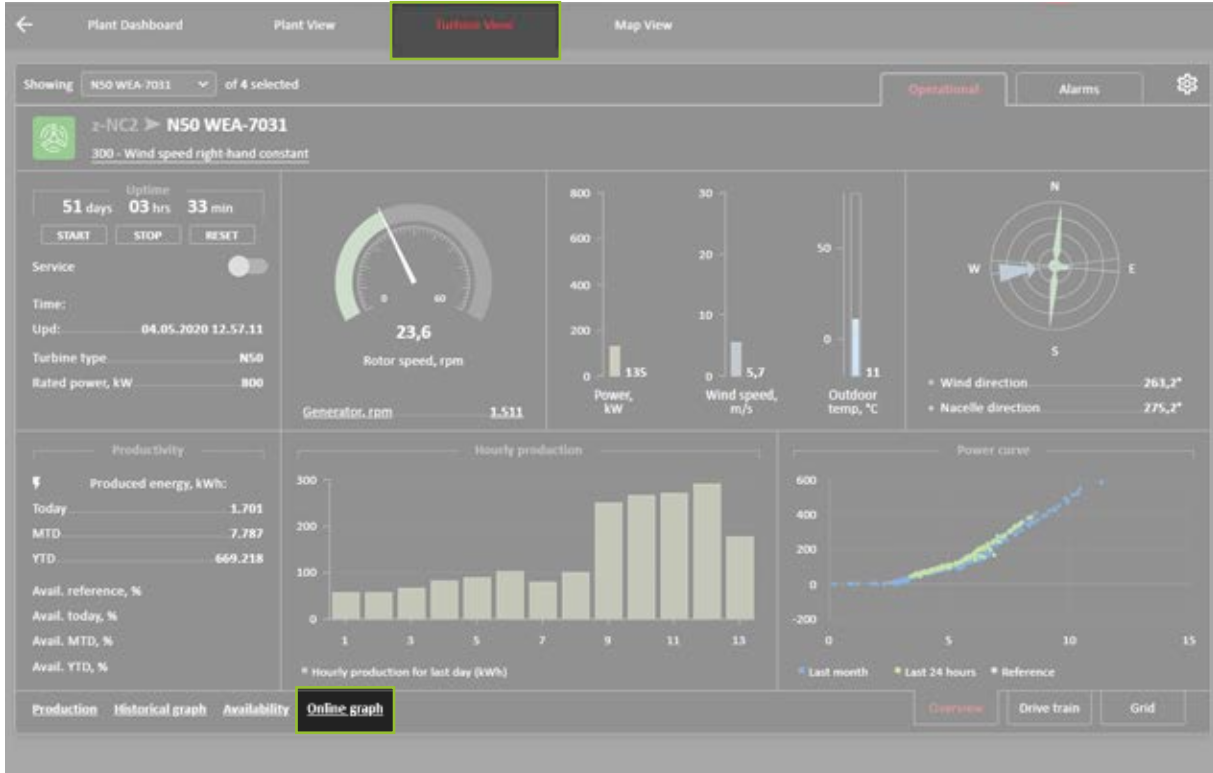
Turbine view - Historical graph



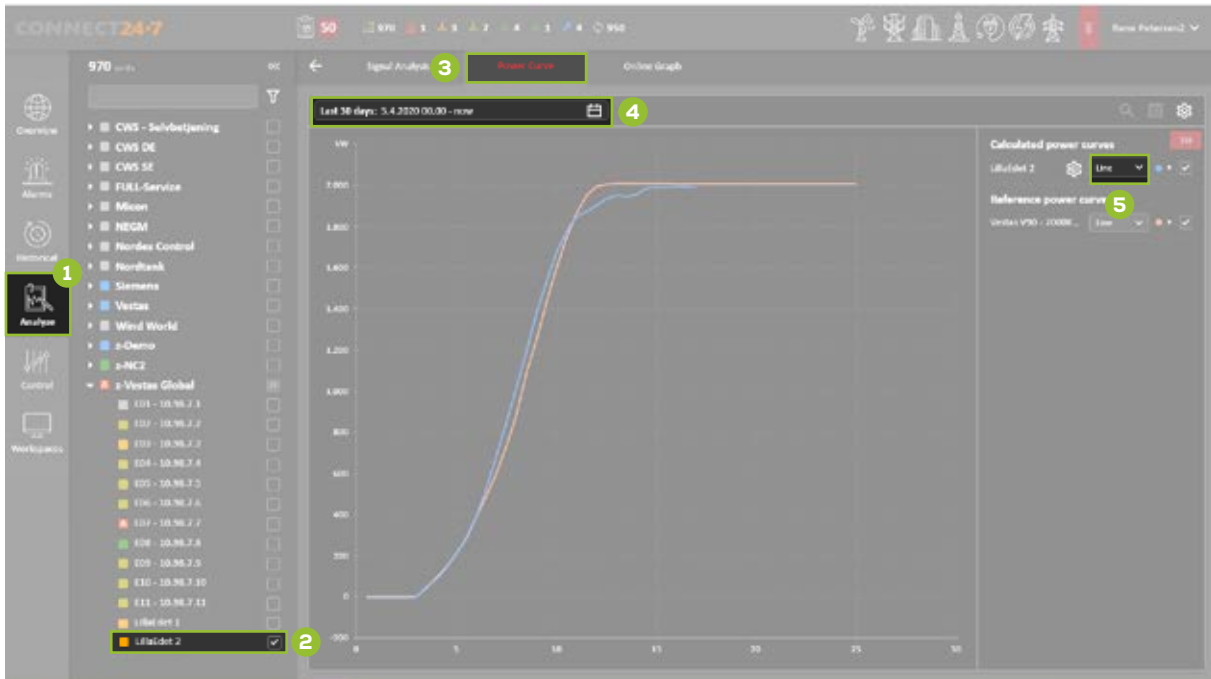
Historical - Historical graph



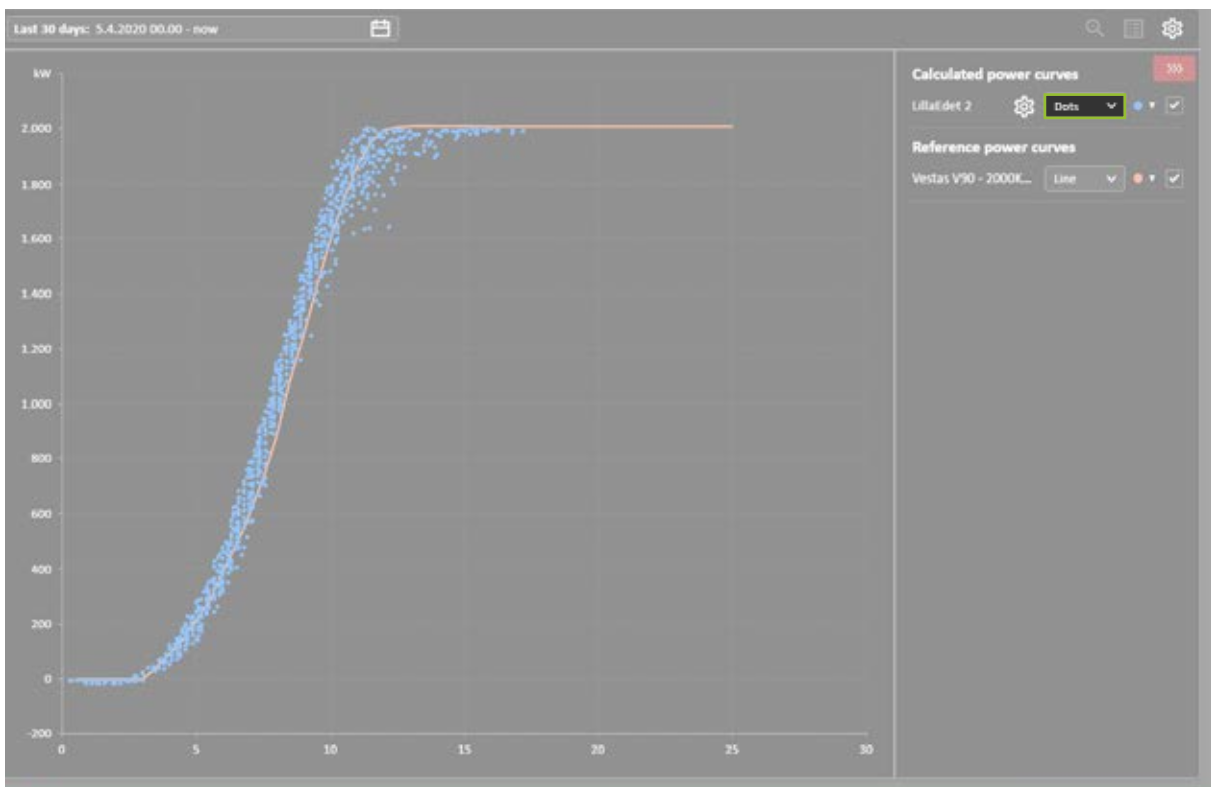
Turbine view - Online graph



Historical - Power curve - line



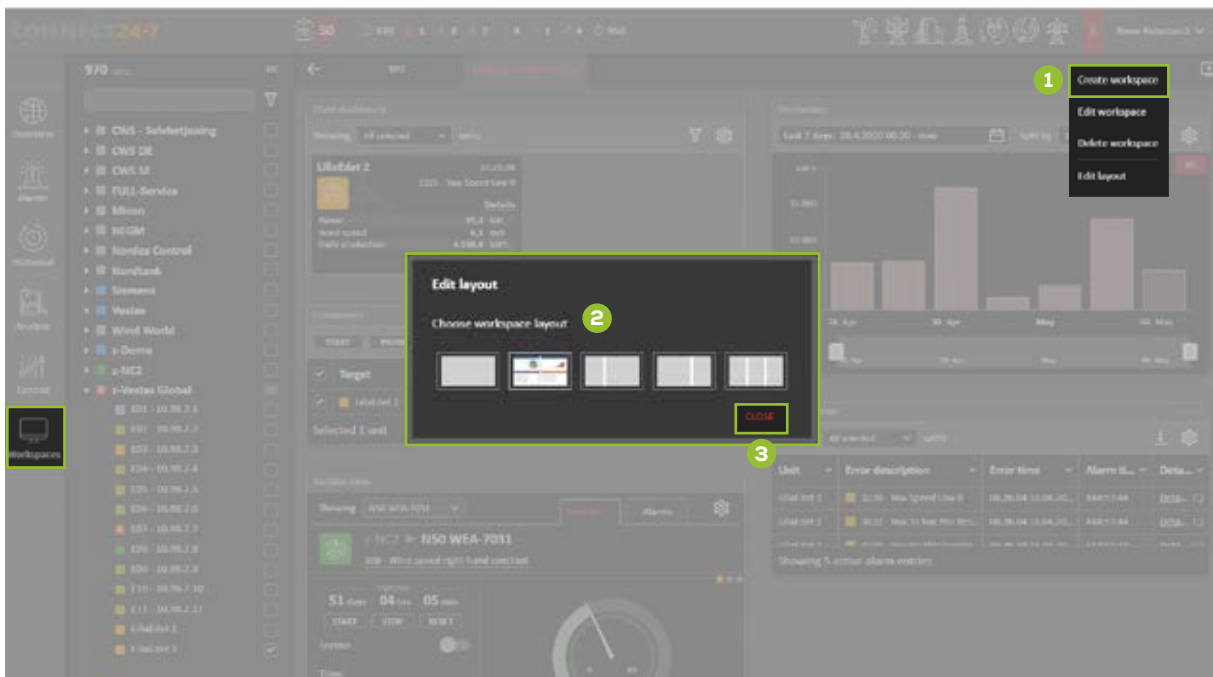
Historical - Power curve - dot



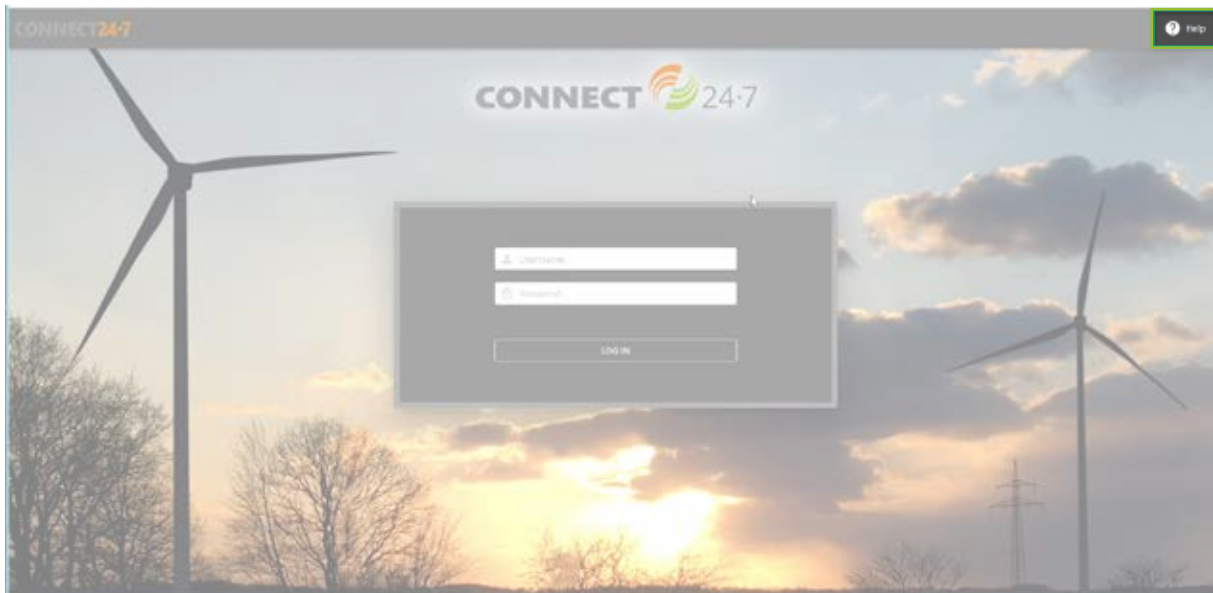
Workspace - New



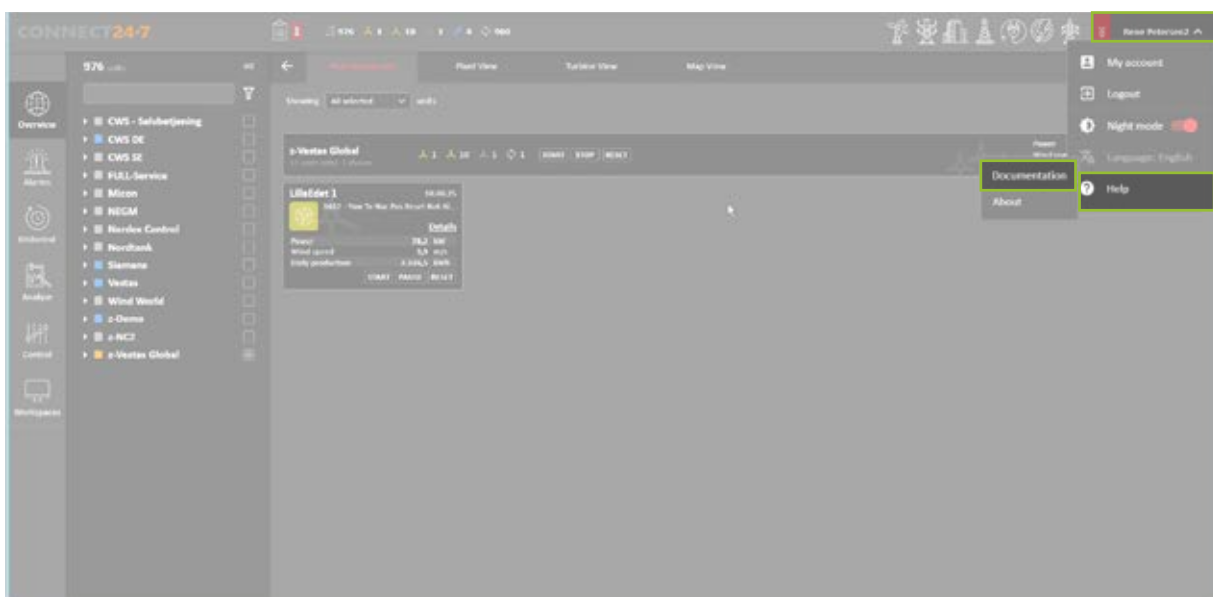
Workspace - Edit



Help - Before Login











After Login



Appendix 1

SCADA color description

SCADA icon colors description will be based on the tree structure filter option.

SCADA description	SCADA icon	Description
Error		Turbine in Alarm mode and not producing (stopped/idle mode)
Warning		Turbine still in operation, notification to surveillance team.
Remote stop		Turbine has been stopped from remote, taken out of production.
Autoreset		Turbine has stopped, after delay (depends on turbine type) time turbine will automatically reset and start producing energy again.
Production		Turbine is in normal operating mode and producing energy.
In service		Turbine is in service mode, either remote or local by service team.
Service Level 1		Service Level1 = Surveillance team working on turbine.
Service Level 2		Service Level2 = Surveillance technical experts working on trouble shooting.



Connected Wind Services A/S

Åkarevägen 17 · 31132 Falkenberg · Sverige
+46 454 08 50 · drift.se@connectedwind.com

