



SERVICE & MAINTENANCE • SERVICE PROJECTS • COMPONENTS & SPARE PARTS • SURVEILLANCE

Advancing your future movement
Longevity is the key to advancing
sustainable movement

CONNECTED 
WIND SERVICES

„When it comes to ensuring uptime
and helping protect your assets,
no other ISP in the wind industry
offers the experience, products and
dedication to high quality service as
Connected Wind Services.”





A large white wind turbine with three blades, one of which has a red stripe, stands prominently in the foreground. Another smaller turbine is visible in the background to the left. The scene is set in a grassy field under a clear blue sky with some light clouds near the horizon.

40+

Service teams

1500+

Wind turbines in service

30+

Years experience



Advancing movement since 1987

We are Connected Wind Services. An independent, global service partner in the renewable energy market. Our history and heritage go a long way back, our experience has proven time and time again.

Dedicated to advancing the transition to sustainable energy, we challenge the current service solutions and explore new, innovative ways to reduce complexity and optimize the operation of wind turbines by combining our vast knowledge and experience with progressive thinking.

Always observant and understanding of individual client needs, we tailor solutions and service concepts to reduce down-time and ensure longevity, maximum yield and protection of assets and resources.

For the benefit of us all. We believe pioneering people to be the driving force behind positive change. And we aim to do our part in supporting their mission.

With a local presence and trust and transparency as our guiding principles, our clients can rely on us as the professional partner, that makes their obstacles disappear and keeps them moving forward.

Advancing the transition to sustainable energy

We help push the green movement – keeping the world in motion. Dedicated to advancing the transition to sustainable energy, we challenge the current service solutions and explore new, innovative ways to reduce complexity and optimize the operation of wind turbines.

We value direct and transparent communication with our customers – to help businesses advance and our partners to build a sustainable foundation for the future. Because the only way we will succeed in advancing the movement towards sustainable energy and bringing us one step closer to a greener future, is together.







Raising standards

Rest assured, we maintain the highest level of safety with committed technicians who possess the highest GWO training standards. We never stop innovating enabling us to continuously improve our service and solutions - advancing technology and extending the life of our clients' assets. Our local presence ensures short response time and fast handling of customer needs.

We live up to maximum quality standards - often even going beyond original specifications as a natural result of our focus on the full life cycle.

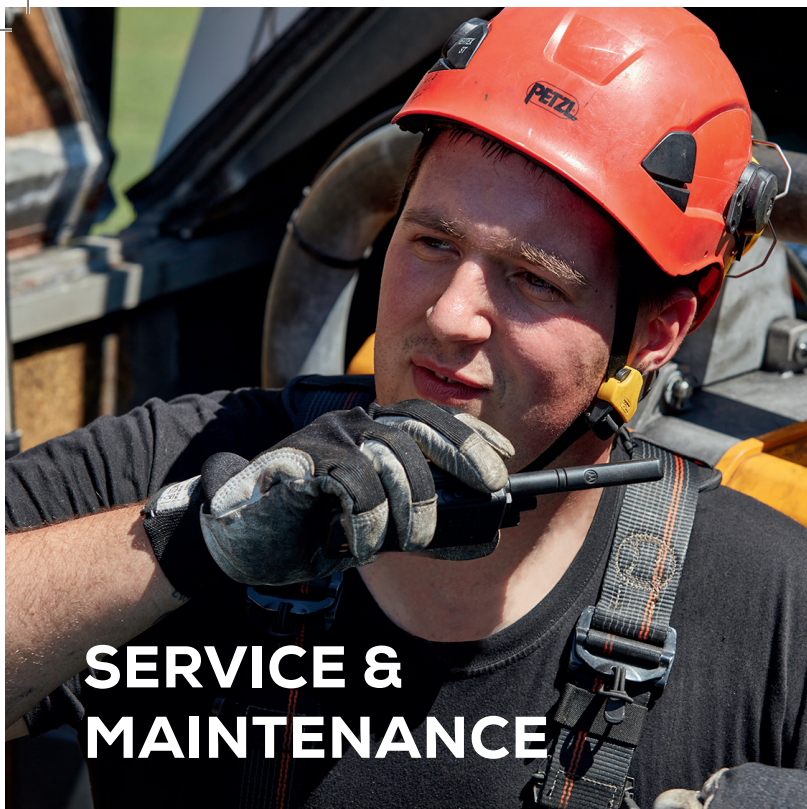
Individual and flexible

Our history and strong presence in Denmark, Germany, Sweden and France means we can work closely with you to address your local needs, both in these countries and in others across Europe where we have worked. This strong network of local service stations has given us an understanding of how to offer flexible wind turbine services best suited to local conditions, such as political agendas, compliance and geographical topology.

We support owners, operators and utilities with flexible service packages, exchange of main components and an extensive stock of spare parts.

Knowledge, flexibility and our ability to adapt to your individual requirements together with a high availability of special tools and components are key to our success.

„Besides offering great service our fast supply chain and huge spare parts inventory ensure that you are in good hands.“



**SERVICE &
MAINTENANCE**



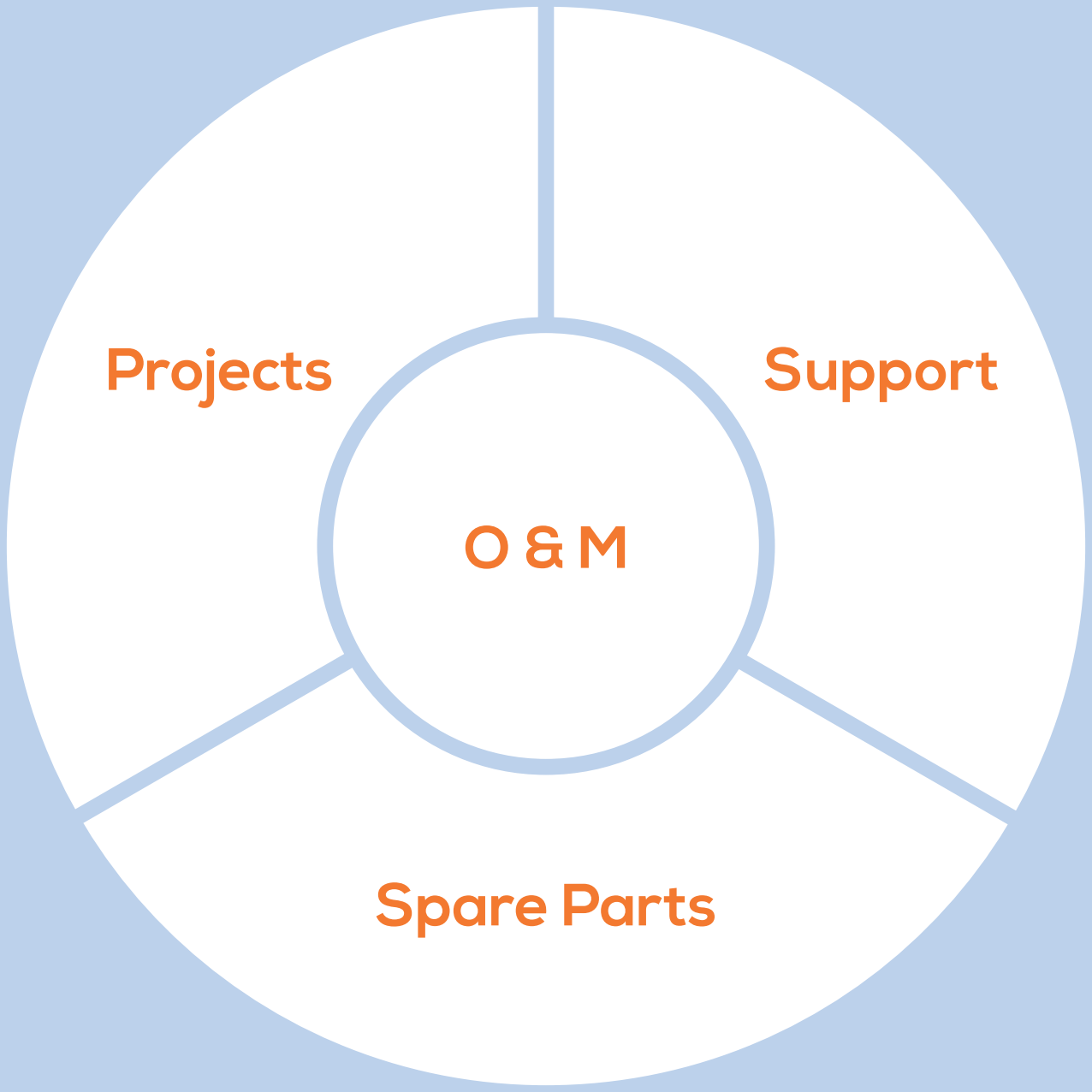
SERVICE PROJECTS



SURVEILLANCE



**COMPONENTS &
SPARE PARTS**



Projects

Support

O & M

Spare Parts

Protecting assets and moving investments

As Europe's first Independent Service Provider, we can offer you extensive knowhow, resources and strong local support coordinated from a central point of contact. You'll benefit from best practices learned from over 30 years of working closely with technicians and owners of wind farms throughout Europe.

Our modular offerings mean we can offer you everything from performance upgrades and improvements and 24/7 surveillance to basic scheduled service of your wind turbines. Furthermore, we take care of your wind turbines continuously throughout their full lifetime.

With one point of contact and a strong local presence, you can count on Connected Wind Services to deliver exactly what you need. In fact, we're determined to do whatever it takes to protect your assets, optimize performance and keep your wind turbines running.

„We are always focused on prolonging the lifetime of your wind turbines often extending it 5 to 10 years beyond the designed lifetime.“

Flexible service solutions

Extend your service warranty package

Whether your service package includes scheduled preventive maintenance, predictive maintenance or unscheduled repairs, you can count on a determined effort to get the most out of the full life cycle of your wind turbines.

Maximize the yield on your wind turbines is our goal. Our aim is to ensure the profitability of your wind turbine long after your guarantee has expired.

Count on the highest QHSE standards

Rest assured, we maintain the highest level of safety with technicians who possess the highest GWO training standards. Furthermore we live up to maximum quality standards – often even going beyond original specifications as a natural result of our focus on the full life cycle.



Management Service

**Sicherheits Certifikat
Contractoren
(SCC** Version 2011)**



CWS DK ISO 9001:2015

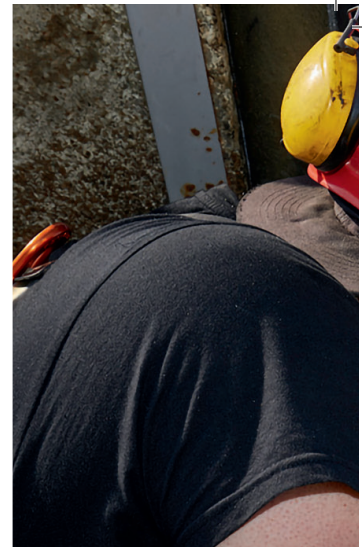
CWS REF ISO 9001:2015



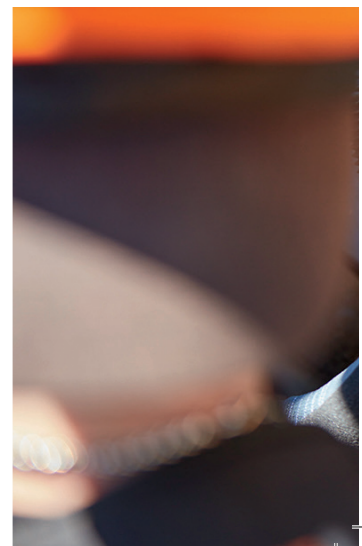
**CWS SE Certificate
ISO 9001 & 14001**

Content		Basic	Business	First	Partner
Scheduled Maintenance	Consumables	✓	✓	✓	Optional
	Manpower (incl. traveltime)	✓	✓	✓	Optional
Unscheduled Maintenance	Manpower (incl. traveltime)	✗	✓	✓	Optional
	Spare Parts (Main Components excluded)	✗	✓	✓	Optional
Surveillance	24/7	Optional	✓	✓	Optional
Availability Warranty	By arrangement	Optional	Optional	✓	Optional
Main Components	Included	✗	✗	✓	Optional

A comprehensive set of flexible service solutions ranging from scheduled service to conditional monitoring helps you get the maximum yield.



„Get dedicated service from people who really know your local business, but at the same time are supported by one of Europe's strongest ISPs.“





Sending us up, sends costs down

Take advantage of an experienced service projects service organization. Connected Wind Services has more than 30 years' experience, extensive knowledge resources and strong local presence in delivering service projects.

Knowledge, flexibility and our ability to adapt to your individual requirements together with a high availability of special tools and components are key to our success.



More than 5000 reasons to rely on us

As the ISP with the largest components and spare parts inventory in the market Connected Wind Services will have your turbine up and running again quickly. With thousands of spare parts in stock, Connected Wind Services can quickly provide almost any component and spare part needed by wind farms throughout the world – whether it is a discontinued part or the latest technology.

Strong ties to key wind turbine OEMs, equipment OEMs and sub-suppliers further improves our ability to identify, source and supply the parts you need efficiently. In fact, we source both original and upgraded components and spare parts worldwide.



Cost-efficient up-tower repair

In some cases the most cost efficient gearbox repair is performed up-tower. Connected Wind Services has long experience in performing up-tower repairs. Our group of fully certified technicians are ready to provide their services on short notice at your site.

Our goal is to provide you with the most cost-efficient solution possible.




24/7-surveillance of your turbine

CONNECT24•7 is a plug 'n' play solution that monitors vital parameters on your wind turbine, whether your setup consists of a single turbine or an entire wind farm.

You do not need to worry about your turbine. Our Surveillance Centre is staffed with skilled turbine technicians who totals more than 100 years of experience and they monitor your turbine around the clock, 365 days a year. In case of alarms, our technicians will access the turbine online to identify and process the error, thus preventing unnecessary call-outs.





**Keeping your
investment moving**



Connected Wind Services

We are one of Europe's leading Independent Service Providers for wind turbines. For more than 30 years, our multi-brand, multi-skill approach, combined with local competencies, has been the foundation for providing wind turbine operators and owners with unrivalled reliability and service.

We adapt to individual needs and are focused on the full life cycle of wind turbines.

Our reputation is built on efficiency, flexibility and safety within wind turbine Service & Maintenance, Service Projects and retail of Components & Spare Parts.

We deliver integrated, high-value services that help maximize yield and protect assets – providing all you need from a single point of contact.



Paper:
ENVIRO-Recycling-Paper
FSC® Recycled
ISO 14001

Concept and layout:
Werbewolke GmbH
www.werbewolke.de

Print:
Druckerei Ernst H. Nielsen
www.druckerei-nielsen.de

Group Headquarters:

Connected Wind Services A/S
Grenåvej 629, 8541 Skødstrup
Denmark
+45 8623 0155
info@connectedwind.com
www.connectedwind.com

Business Units:

Connected Wind Services Danmark A/S
Grenåvej 629, 8541 Skødstrup
Denmark
+45 8623 0155
info.dk@connectedwind.com
www.connectedwind.com/dk

Connected Wind Services Sverige AB
Åkarevägen 17, 311 32 Falkenberg
Sweden
+46 10 45 40 800
info.se@connectedwind.com
www.connectedwind.com/se

Connected Wind Services Deutschland GmbH
Mühlenberg 19, 25873 Rantrum
Germany
+49 4848 901 28-0
info.de@connectedwind.com
www.connectedwind.com/de

