

Connected Wind Services

Connected Wind Services is Europe's leading Independent Service Provider for wind turbines. For more than 30 years, our multi-brand, multi-skill approach, combined with local competencies, has been the foundation for providing wind turbine operators and owners with unrivalled reliability and service.

We adapt to individual needs and are focused on the full life cycle of wind turbines.

Our reputation is built on efficiency, flexibility and safety within wind turbine Service & Maintenance, Service Projects and retail of Components & Spare parts.

We deliver integrated, high-value services that help maximize yield and protect assets – providing all you need from a single point of contact.



ALL YOU NEED

Group Headquarters:
Connected Wind Services A/S
Grenåvej 629, 8541 Skødstrup
Denmark
+45 8623 0155
info@connectedwind.com
www.connectedwind.com

Business Units:
Connected Wind Services Danmark A/S
Grenåvej 629, 8541 Skødstrup
Denmark
+45 8623 0155
info.dk@connectedwind.com
www.connectedwind.dk

Connected Wind Services Sverige AB
Åkarevägen 17, 311 32 Falkenberg
Sweden
+46 10 45 40 800
info.se@connectedwind.com
www.connectedwind.se

Connected Wind Services Deutschland GmbH
Mühlenberg 19, 25873 Rantrum
Germany
+49 4848 901 28-0
info.de@connectedwind.com
www.connectedwind.de



Connected Wind Services Refurbishment A/S
Grenåvej 629, 8541 Skødstrup
Denmark
+45 8623 0155
info.ref@connectedwind.com
www.connectedwind.com



SERVICE MAINTENANCE

SERVICE PROJECTS

COMPONENTS & SPARE PARTS



ALL YOU NEED

Service Maintenance

We keep your wind turbine running



We take care!

Whatever you need we will find a way

When it comes to protecting your assets and keeping your wind turbines running, no other Independent Service Provider in the wind industry can match Connected Wind Services in terms of experience, flexible packages and dedication.

A wide variety

We can help you tap virtually any kind of wind turbine to its full potential, including brands like Vestas (NEG Micon, Nordtank, Micon, Wind World, etc.), Siemens (Bonus),

Fuhrländer and the MD70/77 platform, Senvion (Repower, HSW), Gamesa and Suzlon.

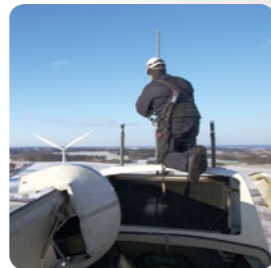
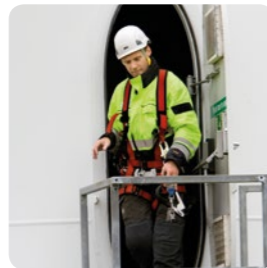
Strong local presence backed by a solid organization

Our history and strong presence in Denmark, Germany and Sweden means we can work closely with you to address your local needs, both in these countries and in others across Europe where we have worked. This strong network of local service stations has given us an understanding of how to offer flexible wind turbine services best suited to local conditions, such as politi-

cal agendas, compliance and geographical topology.

One point of contact

At the same time, you can always count on one dedicated contact person who will make sure things run smoothly. And you'll benefit from best practices extracted from 30+ years of success working closely with technicians and owners of wind farms throughout Europe. This includes wind farms of all sizes, from privately owned ones to IPPs and up to the largest multi brand, utility owned wind farms.



Service Maintenance

- > **Strong service network: 45+ service teams**
- > **Large customer base: 1800+ wind turbines in service**
- > **Europe's first ISP: 30+ years of experience**

Around the clock, 365 days a year surveillance of **your** wind turbines

We take good care of your turbines

CONNECT24•7 is a plug n 'play solution that monitors vital parameters on your wind turbine, whether your setup consists of a single turbine or an entire wind farm.

You do not need to worry about your turbines. Our Surveillance Center is staffed with skilled turbine technicians who totals more than 100 years of experience, and they monitor your turbines around the clock, 365 days a year. In case of alarms, our technicians will access the turbine online to identify and process the error, thus preventing unnecessary call-outs.

CONNECT24•7 Surveillance

- > **Connected Wind Services provides pro-active surveillance and technical support around the clock, 365 days a year**
- > **The Surveillance Center is staffed with competent turbine technicians who totals more than 100 years of experience**
- > **Internet access; monitor the operation of the turbine yourself via PC**
- > **App for monitoring turbine operation via mobile or tablet, also when you travel**
- > **Cost-saving**
 - Save both your phone line in the turbine, and the analog line at home / in the office
 - No additional investments in expensive software protocols to access different turbine types online
- > **Future-proof IP-solution**

	Basic	Standard	Extended	Premium
 Active surveillance around the clock, 365 days a year	✓	✓	✓	✓
 Fixed price on installation and hardware	✓	✓	✓	✓
 Incl. sim card and data	✓	✓	✓	✓
 Monitor turbine production via the internet, and get access to:				
<ul style="list-style-type: none"> • Map view • Site overview • Dashboard • Historical data • Efficiency 		✓	✓	✓
<ul style="list-style-type: none"> • Service • Alarms • Start / stop turbine 			✓	✓
 CONNECT24•7 smartphone app for easy monitoring of turbine operation			✓	✓
 Monthly report on turbine operation directly to your inbox				✓

Earnings Date Jan 1 2015 - Jan 10 2015
 Dividend & Yield 1.28 (2.58%)
 Ex-Dividend Date N/A
 1y Target Est 130.96

How does our experience benefit **you** and your business?

Better asset protection; greater yield

Extend your service warranty package

Whether your service package includes scheduled preventive maintenance, predictive maintenance or unscheduled repairs, you can count on a

determined effort to get the most out of the full life cycle of your wind turbines. Our goal is to maximize the yield on your wind turbines.

Count on the highest QHSE standards

Rest assured, we maintain the highest level of safety with technicians who possess the highest GWO training standards.

Furthermore we live up to maximum quality standards – often even going beyond original specifications as a natural result of our focus on the full life cycle.

Conditional monitoring and predictive maintenance

Surveillance and preventive maintenance

Main component repair and/or replacements

Unscheduled service and corrective maintenance

Scheduled service

Standard Service- and Maintenance Contracts				
Content		CWS-Basic	CWS-Economy	CWS-Business
Scheduled Maintenance	Manpower (incl. traveltime)	✓	✓	✓
	Consumables	✓	✓	✓
Surveillance	24/7	optional	✓	✓
Unscheduled Maintenance	Manpower (incl. traveltime)	✗	✓	✓
	Spare Parts (Major Components excluded)	✗	✗	✓
Major Components	inclusive	✗	✗	optional
Availability Warranty	97 %	optional	optional	optional

Options for all Contracts: Safety Checks, Gear Endoscopies & Oil Exchange, Gear-Generatoralignment, Blade Inspections and Repairs
Further options on request
OEM Portfolio: Vestas; NEC Micon (incl. Nordtank); Servion (incl. REpower MD 70/77 & MM 70, HSW & Jakobs); Südwind S 70/77

Visit www.connectedwind.com for more information.

From regular preventive service to conditional monitoring, your local service team from Connected Wind Services provides what you need.

